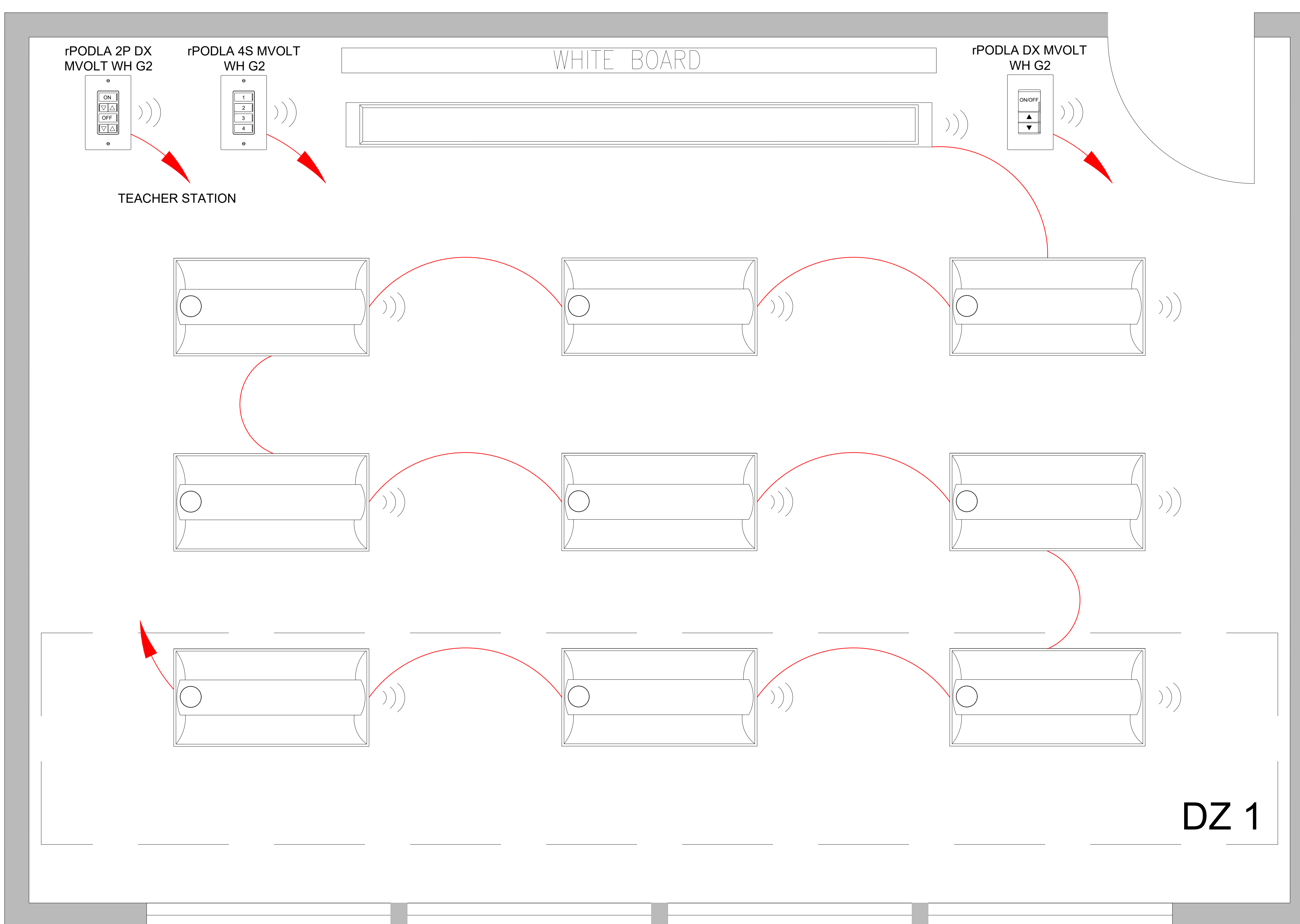




**nLIGHT AIR:**  
**CLASSROOM - AIR ENABLED FIXTURES**





**DIAGRAM LEGEND**

-  LINE VOLTAGE WIRES
-  LINE POWER



**SUPPORTS THE FOLLOWING REQUIREMENTS:**

-  OCCUPANT SENSOR CONTROLS, (C405.2.1)
-  TIME-SWITCH CONTROLS, (C405.2.2)
-  DAYLIGHT-RESPONSIVE CONTROLS, (C405.2.3)
-  SPECIFIC APPLICATION CONTROLS, (C405.2.4)
-  MANUAL CONTROLS, (C405.2.5)
-  ENHANCED DIGITAL LIGHTING CONTROLS, (C406.4)

SEE HILA BASIS OF DESIGN TO COMPLY WITH IECC 2018 SECTION C405