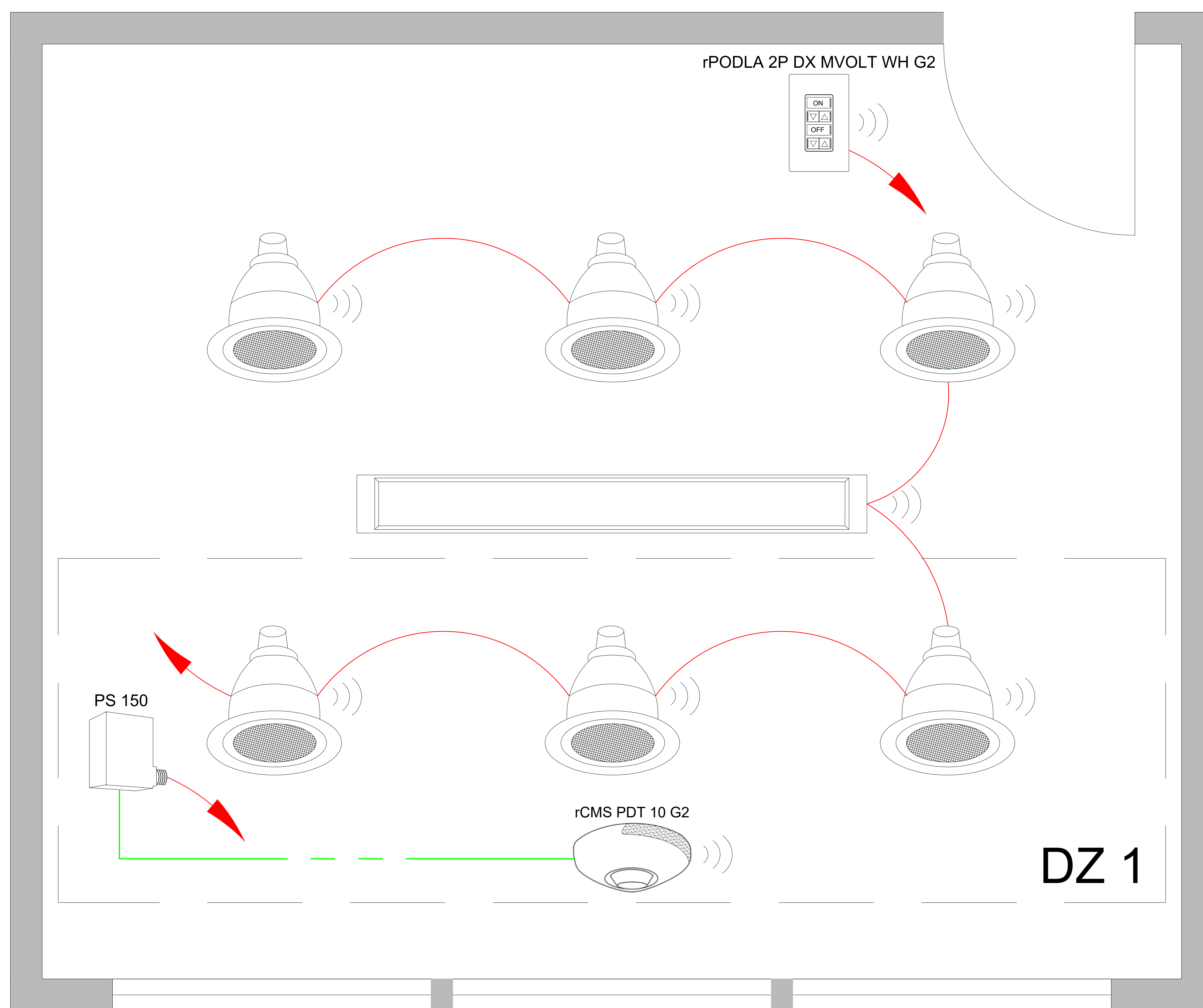


## nLIGHT AIR: CONFERENCE - AIR ENABLED FIXTURES



### DIAGRAM LEGEND

- LOW VOLTAGE
- LINE VOLTAGE WIRES
- ➔ LINE POWER



### SUPPORTS THE FOLLOWING REQUIREMENTS:

- ✓ OCCUPANT SENSOR CONTROLS, (C405.2.1)
- ✓ TIME-SWITCH CONTROLS, (C405.2.2)
- ✓ DAYLIGHT-RESPONSIVE CONTROLS, (C405.2.3)
- ✓ SPECIFIC APPLICATION CONTROLS, (C405.2.4)
- ✓ MANUAL CONTROLS, (C405.2.5)
- ✓ ENHANCED DIGITAL LIGHTING CONTROLS, (C406.4)

SEE HILA BASIS OF DESIGN TO COMPLY WITH IECC 2018 SECTION C405