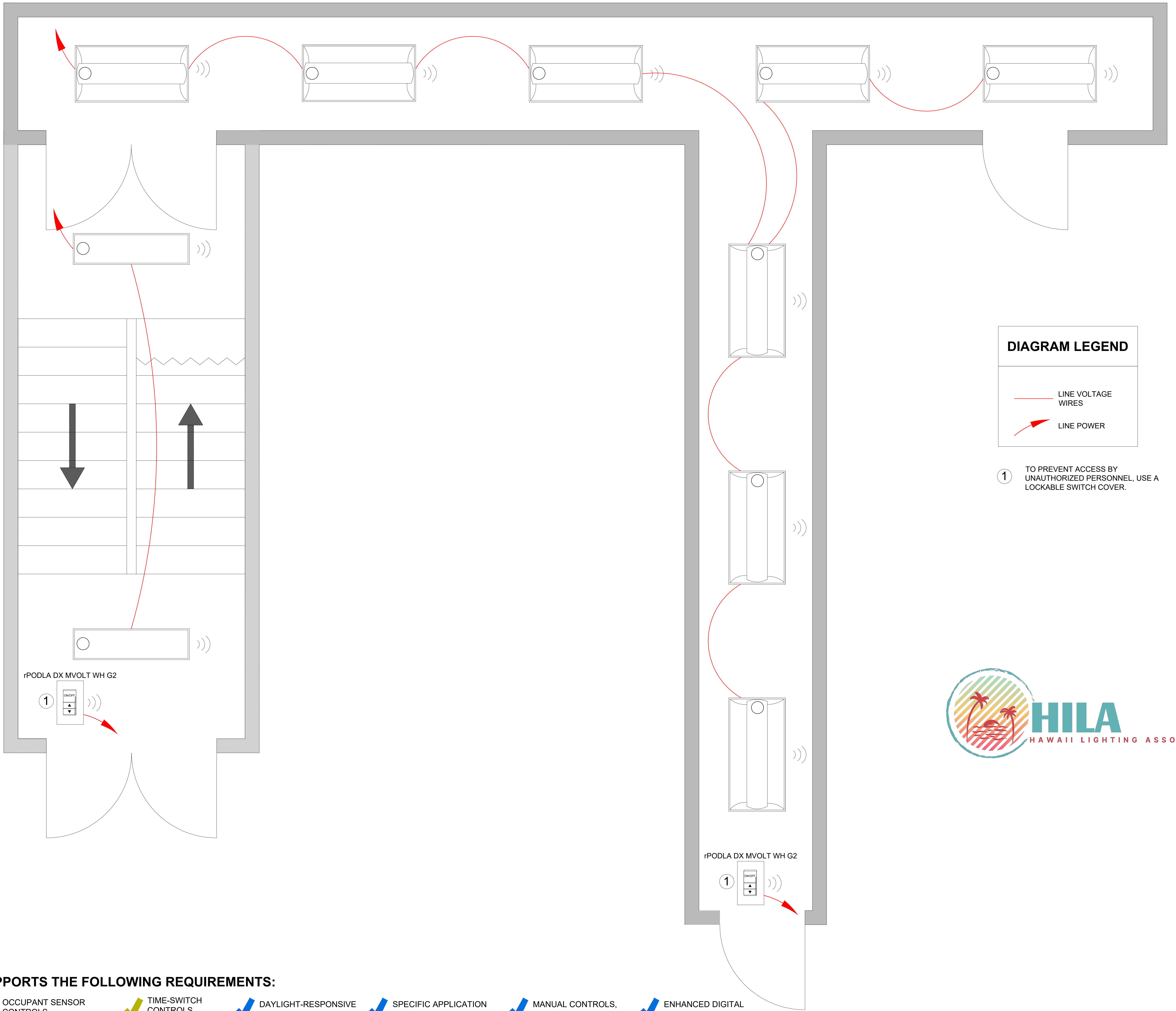


**nLIGHT AIR:**  
CORRIDOR / STAIRWELL - AIR ENABLED FIXTURES



**DIAGRAM LEGEND**

- LINE VOLTAGE WIRES
- LINE POWER

① TO PREVENT ACCESS BY UNAUTHORIZED PERSONNEL, USE A LOCKABLE SWITCH COVER.



**SUPPORTS THE FOLLOWING REQUIREMENTS:**

- ✓ OCCUPANT SENSOR CONTROLS, (C405.2.1)
- ✓ TIME-SWITCH CONTROLS, (C405.2.2)
- ✓ DAYLIGHT-RESPONSIVE CONTROLS, (C405.2.3)
- ✓ SPECIFIC APPLICATION CONTROLS, (C405.2.4)
- ✓ MANUAL CONTROLS, (C405.2.5)
- ✓ ENHANCED DIGITAL LIGHTING CONTROLS, (C406.4)

SEE HILA BASIS OF DESIGN TO COMPLY WITH IECC 2018 SECTION C405