

nLIGHT AIR:
LARGE OFFICE - POWERPACKS W/ BATTERY SENSORS

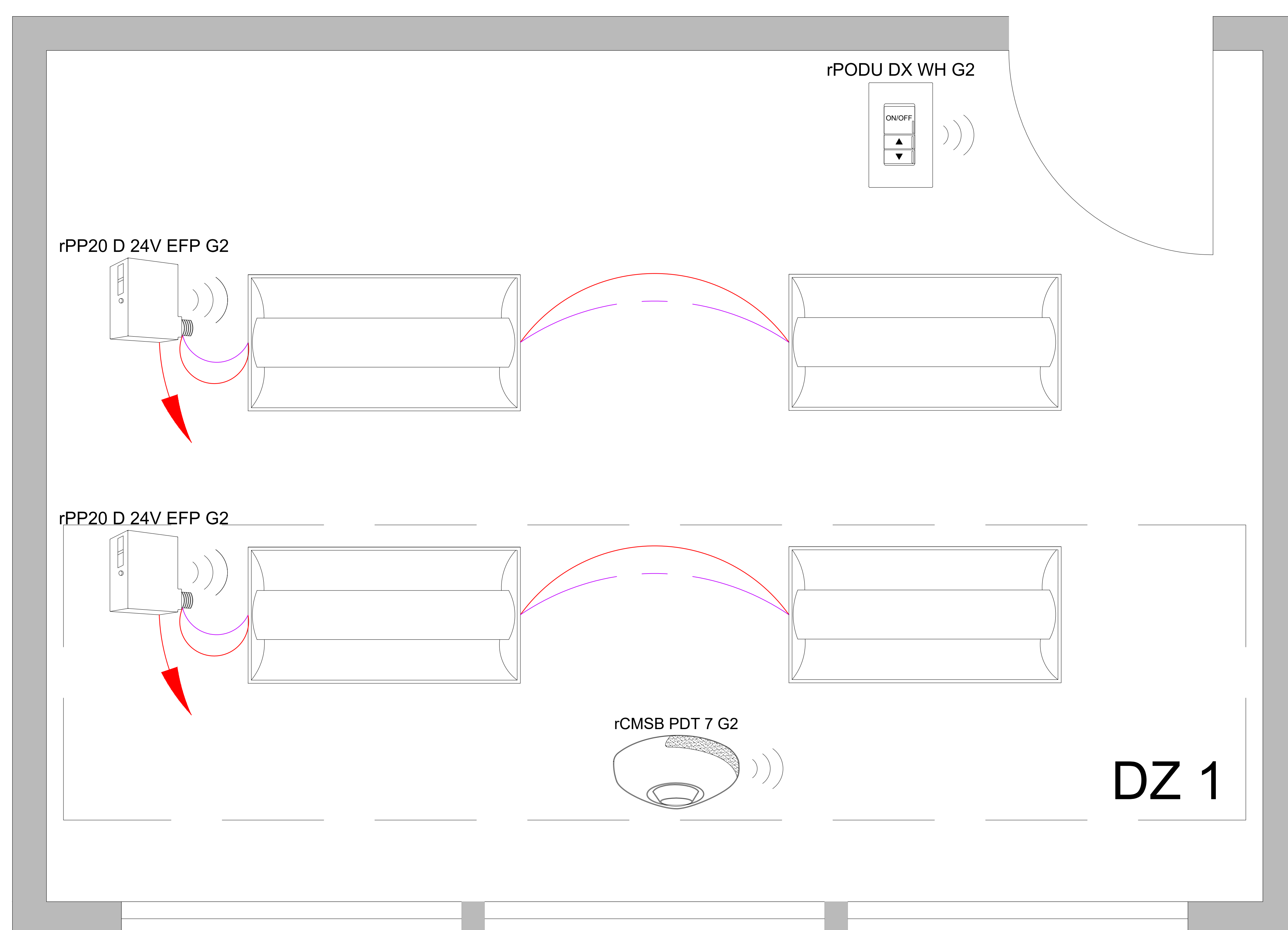


DIAGRAM LEGEND

- LINE VOLTAGE WIRES
- 0-10VDC WIRES
- ➔ LINE POWER



SUPPORTS THE FOLLOWING REQUIREMENTS:

- ✓ OCCUPANT SENSOR CONTROLS, (C405.2.1)
- ✓ TIME-SWITCH CONTROLS, (C405.2.2)
- ✓ DAYLIGHT-RESPONSIVE CONTROLS, (C405.2.3)
- ✓ SPECIFIC APPLICATION CONTROLS, (C405.2.4)
- ✓ MANUAL CONTROLS, (C405.2.5)
- ✓ ENHANCED DIGITAL LIGHTING CONTROLS, (C406.4)

SEE HILA BASIS OF DESIGN TO COMPLY WITH IECC 2018 SECTION C405

nLIGHT AIR: LARGE OFFICE - POWERPACKS W/ 24VDC SENSORS

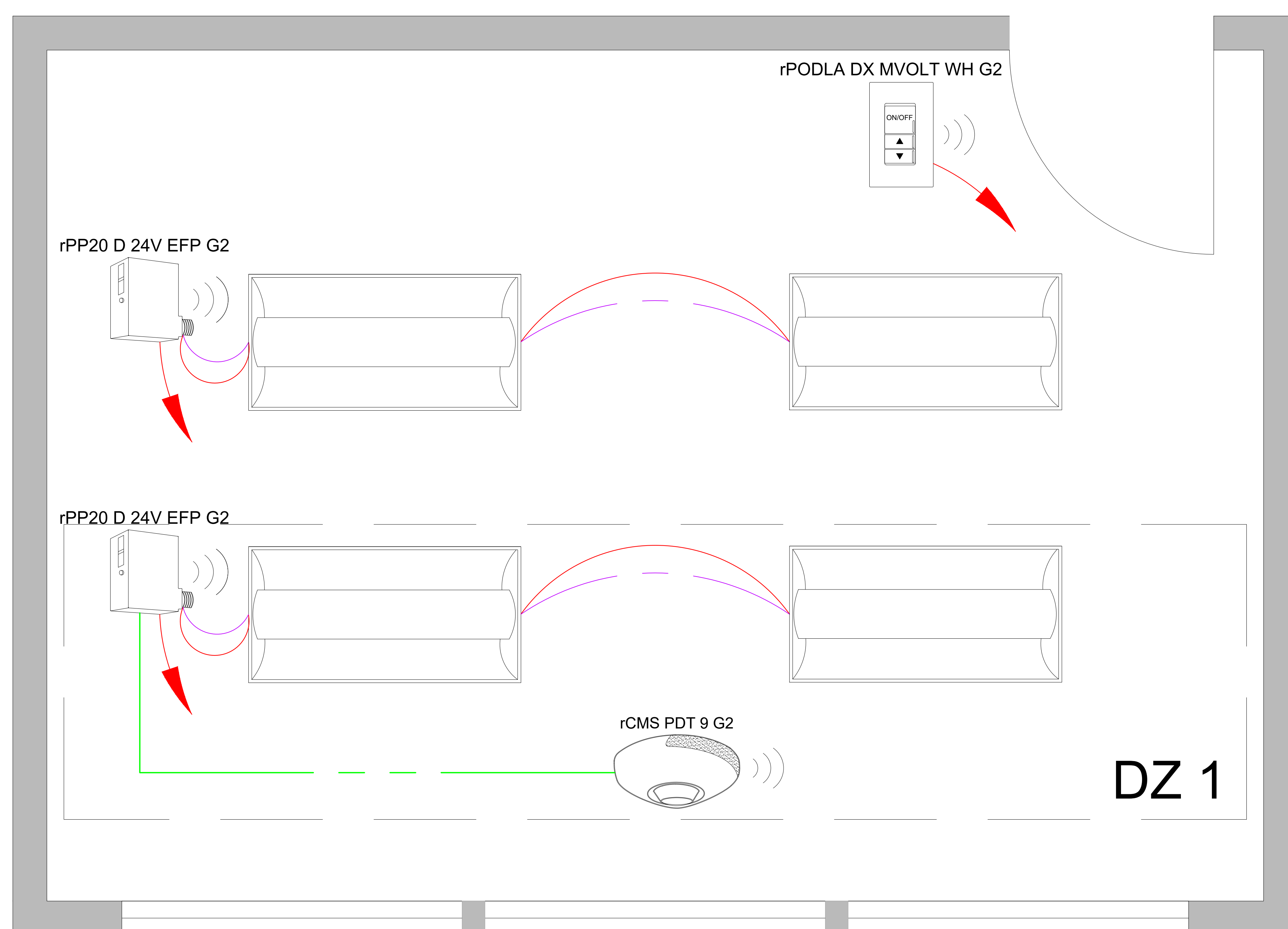


DIAGRAM LEGEND

- LOW VOLTAGE
- LINE VOLTAGE WIRES
- 0-10VDC WIRES
- ➔ LINE POWER



SUPPORTS THE FOLLOWING REQUIREMENTS:

- ✔ OCCUPANT SENSOR CONTROLS, (C405.2.1)
- ✔ TIME-SWITCH CONTROLS, (C405.2.2)
- ✔ DAYLIGHT-RESPONSIVE CONTROLS, (C405.2.3)
- ✔ SPECIFIC APPLICATION CONTROLS, (C405.2.4)
- ✔ MANUAL CONTROLS, (C405.2.5)
- ✔ ENHANCED DIGITAL LIGHTING CONTROLS, (C406.4)

SEE HILA BASIS OF DESIGN TO COMPLY WITH IECC 2018 SECTION C405